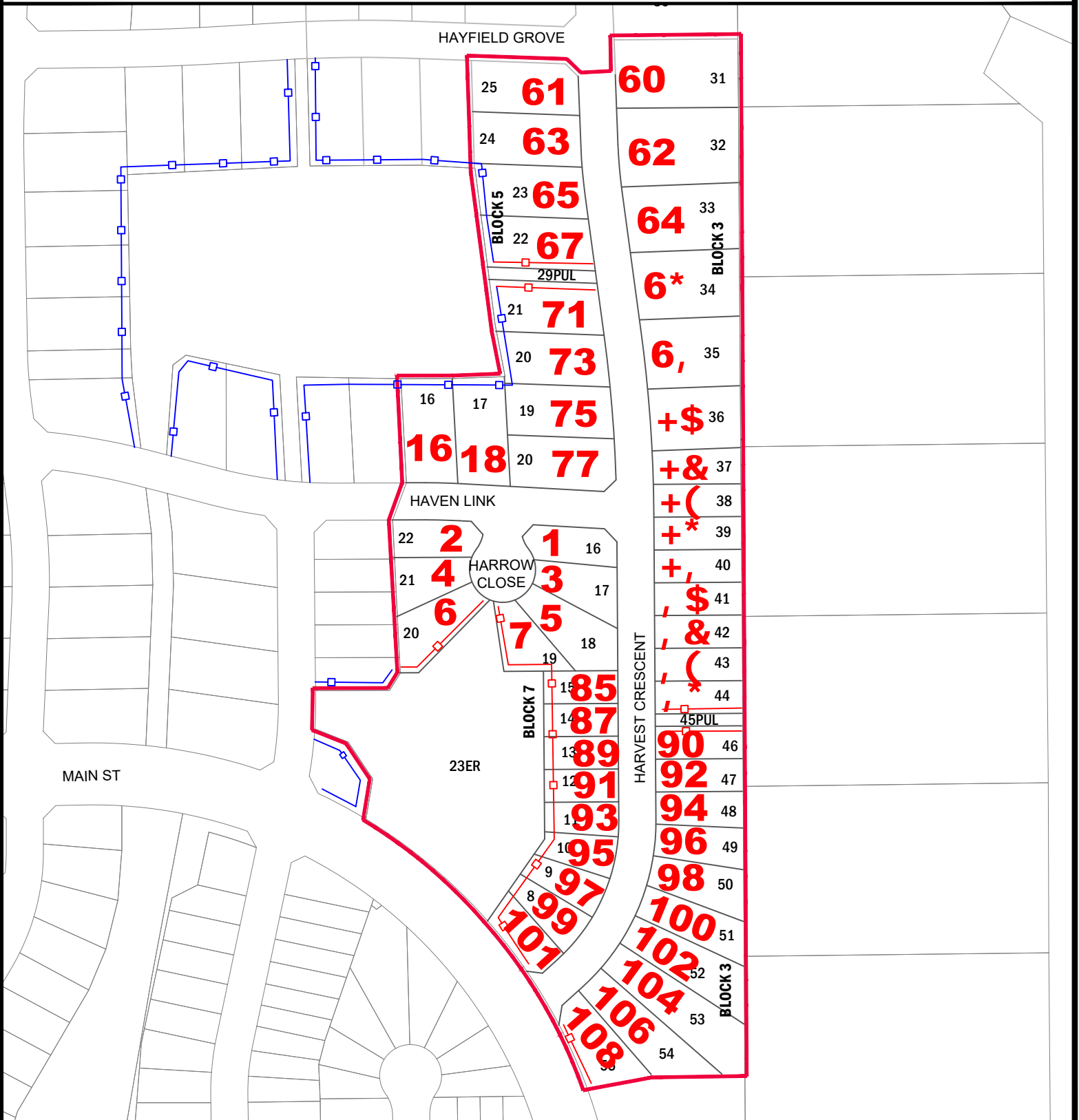


SCHEDULE "B"

Development Area - Ardrossan Estates Stage 4



ARDROSSAN ESTATES STAGE 4 SW 11-53-22-W4

Gross Developable Area = 7.14 ha (17.64 ac) ±
 Total Developable Area = 6.19 ha (15.29 ac) ±

Lot Yield
 - 26 Residential lots - 6.098 ha (15.07 ac) ±

- Existing Fencing
- New Fencing

Drawn By: L. Skelly

Date Drawn: March 3, 2022

Scale: Not to Scale

File No.: 4050-2021S017

Revision Date: March 22, 2022

Revision No. 1

Dwg. No.:

PLANNING & DEVELOPMENT SERVICES

