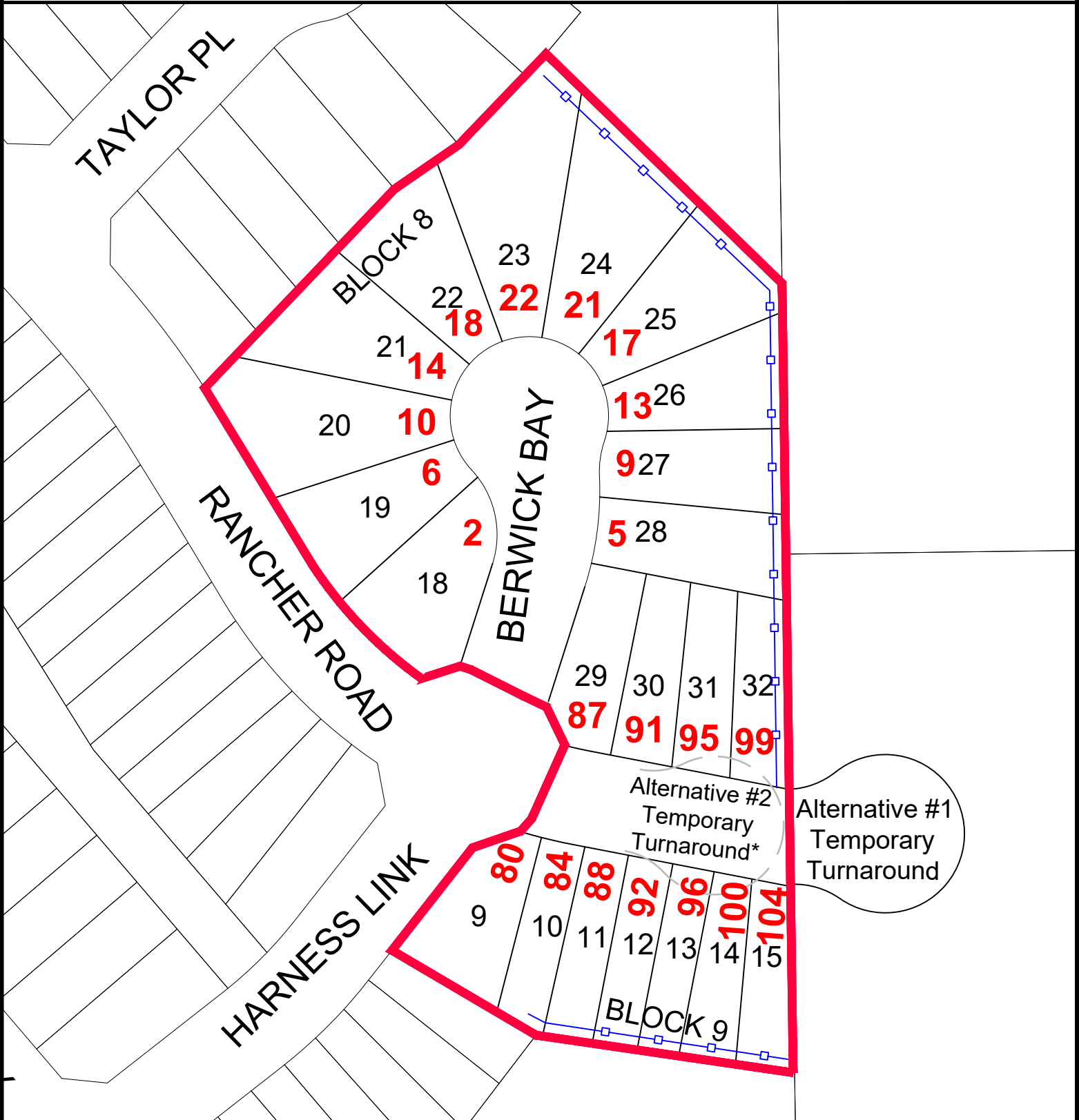




SCHEDULE "B" Page 1 of 1
Development Area - Ardrossan Heights Stage 6



ARDROSSAN HEIGHTS STAGE 6
NW 2-53-22-W4

 Total Area = 1.30 ha (3.21 ac) ±
 Gross Developable Area = 1.07 ha (2.64ac) ±
 Lot Yield - 22 Residential lots - 1.07 ha (2.64 ac)

 Fencing

* Required in the event Alternative 1 is not constructed as required

Drawn By: L. Skelly

Date Drawn: May 29, 2020

Scale: Not to Scale

File No.: 4050-2019S016

Revision Date:

Revision No.

Dwg. No.:

PLANNING & DEVELOPMENT SERVICES

