

CURVE INFORMATION

FOC CURVE DATA					FOC CURVE DATA				
Name	C100	Point	North	East	Name	C106	Point	North	East
R	20.000	PC	5935925.397	57224.686	R	2.000	PC	5935966.504	57223.103
Lc	22.530	PI	5935937.434	57228.510	Lc	2.269	PI	5935955.343	57222.579
Delta	64°32'32"	CC	5935931.452	57205.625	Delta	65°00'00"	CC	5935955.682	57224.926
T	12.629	PT	5935946.060	57219.285	T	1.274	PT	5935954.377	57223.411
Name	C101	Point	North	East	Name	C107	Point	North	East
R	14.000	PC	5935948.161	57240.249	R	2.000	PC	5935961.314	57226.369
Lc	64.114	PI	5935935.136	57230.967	Lc	2.094	PI	5935961.198	57225.220
Delta	262°23'30"	CC	5935956.286	57228.847	Delta	60°00'00"	CC	5935959.323	57226.569
T	15.994	PT	5935946.060	57219.285	T	1.155	PT	5935960.146	57224.746
Name	C102	Point	North	East	Name	C108	Point	North	East
R	20.000	PC	5935948.161	57240.249	R	2.000	PC	5935960.883	57232.101
Lc	10.899	PI	5935943.610	57237.006	Lc	2.094	PI	5935961.821	57231.427
Delta	31°13'26"	CC	5935936.555	57256.537	Delta	60°00'00"	CC	5935959.715	57230.478
T	5.589	PT	5935938.037	57236.592	T	1.155	PT	5935961.705	57230.278
Name	C103	Point	North	East	Name	C109	Point	North	East
R	54.550	PC	5935925.563	57234.182	R	2.000	PC	5935955.494	57234.555
Lc	12.733	PI	5935931.659	57236.118	Lc	2.269	PI	5935956.606	57235.178
Delta	13°13'26"	CC	5935942.077	57182.192	Delta	65°00'00"	CC	5935956.472	57232.810
T	6.396	PT	5935938.037	57236.592	T	1.274	PT	5935957.640	57234.434
Name	C104	Point	North	East	Name	C110	Point	North	East
R	93.800	PC	5935881.595	57231.704	R	2.000	PC	5935949.143	57227.917
Lc	6.442	PI	5935880.770	57234.818	Lc	3.840	PI	5935946.978	57229.780
Delta	3°56'05"	CC	5935972.269	57255.717	Delta	110°00'00"	CC	5935950.447	57229.433
T	3.222	PT	5935880.161	57237.982	T	2.856	PT	5935949.469	57231.177
Name	C105	Point	North	East					
R	84.300	PC	5935890.779	57234.136					
Lc	5.789	PI	5935890.037	57236.935					
Delta	3°56'05"	CC	5935972.269	57255.717					
T	2.896	PT	5935889.490	57239.779					

ROADWAY STRUCTURES

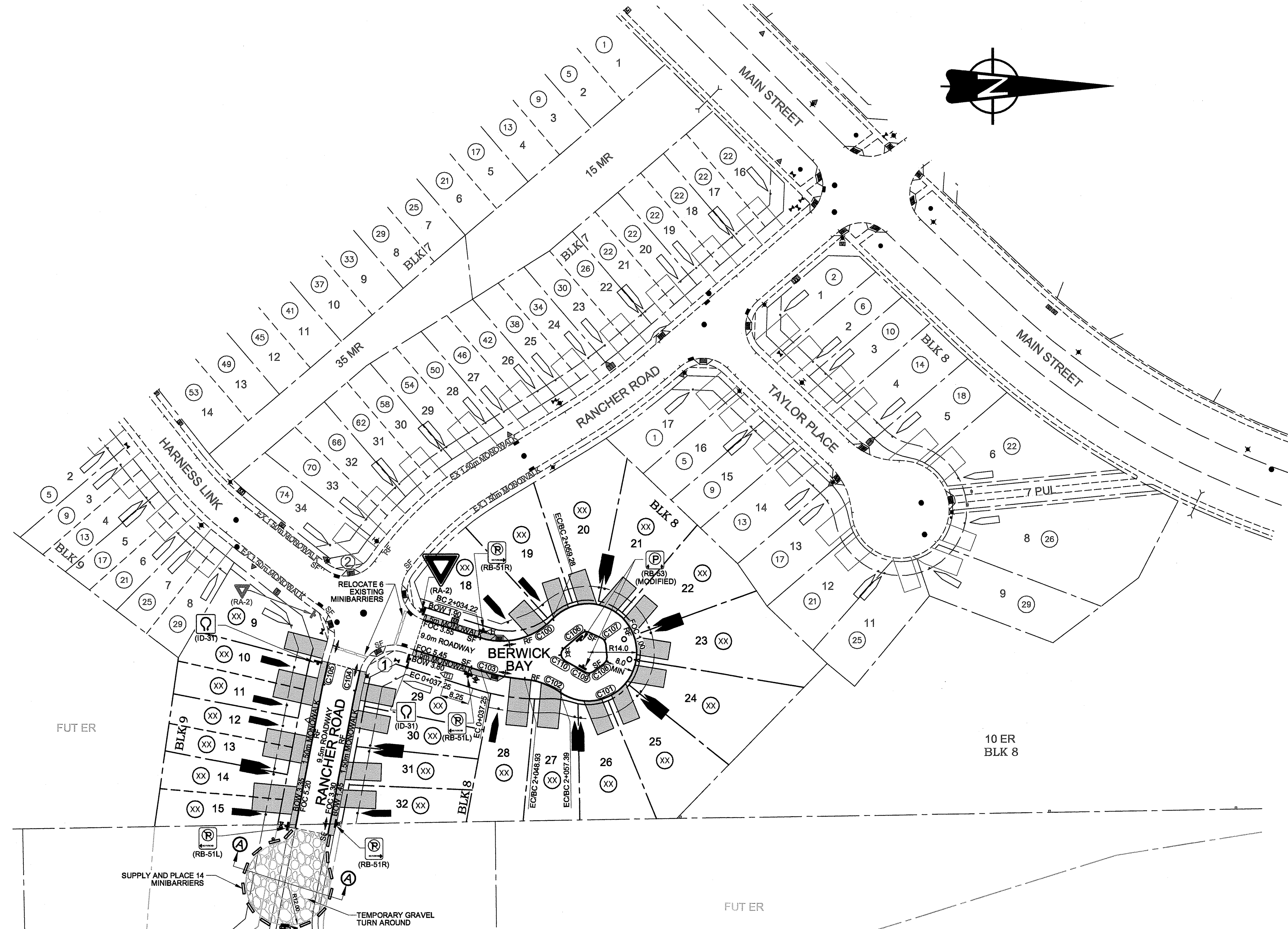
LOCAL ROADWAYS (BERWICK BAY & RANCHER ROAD)
40mm 10mm LT ASPHALT
75mm 10mm LT ASPHALT
150mm 20mm GRANULAR BASE COURSE
150mm SUBGRADE PREP WITH 10kg OF CEMENT STABILIZATION

TEMPORARY GRAVEL TURNAROUND
150mm 20mm GRANULAR BASE COURSE
GEOTEXTILE FABRIC
150mm SUBGRADE PREP

TRAFFIC SIGNS

TO STRATHCONA COUNTY STANDARDS

- ① a RANCHER RD
- b BERWICK BAY
- ② a RANCHER RD
- b HARNESS LINK



SIGNAGE TABLE OF MATERIALS

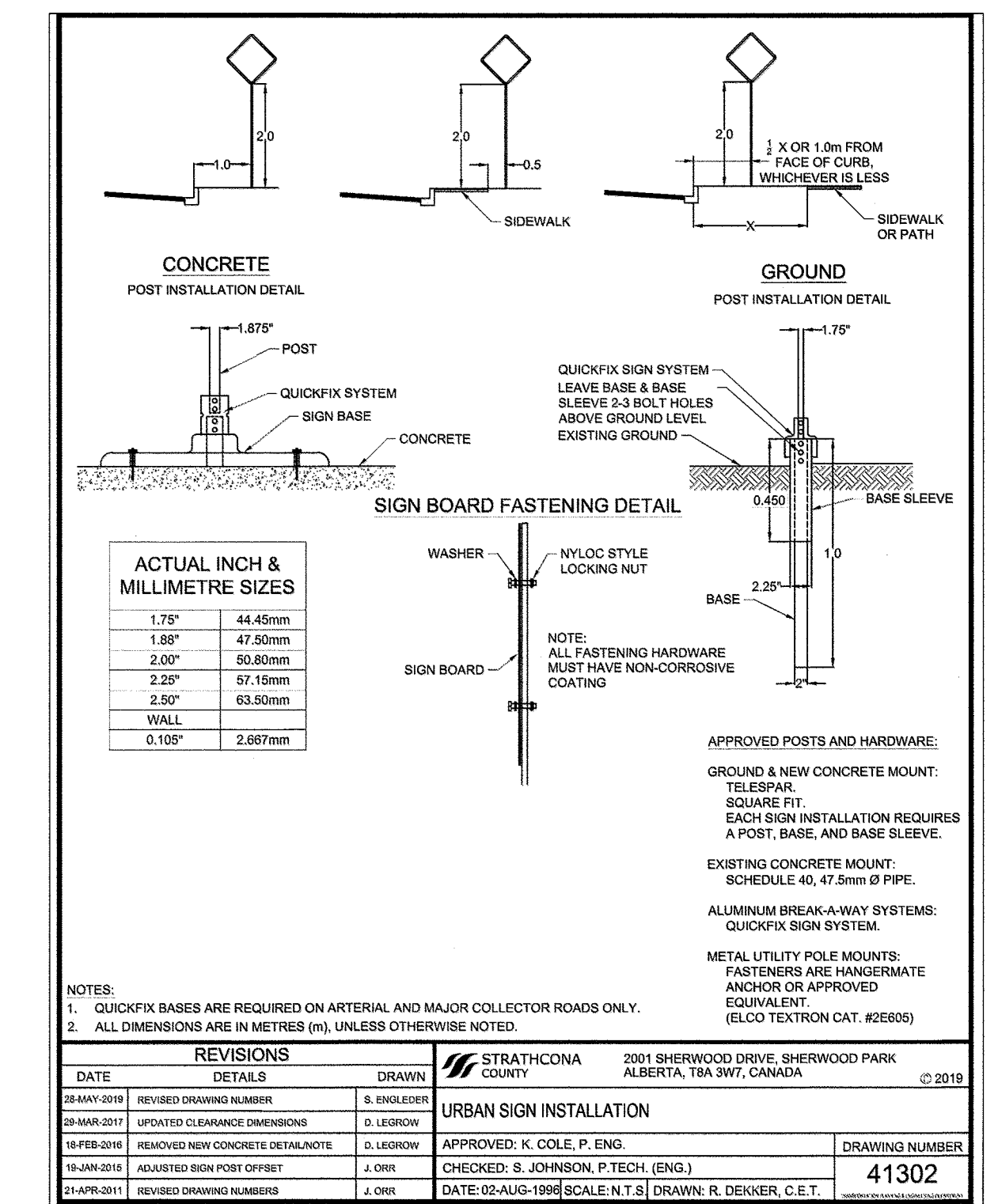
ITEM	TYPE	NUMBER	ITEM	TYPE	NUMBER
WA-8	CHECKERBOARD - DEAD END	1	RB-51	PARKING PROHIBITED	1
RA-2	YIELD	1	RB-53	PARKING PERMITTED (NEXT TO ISLAND)	2
RB-51R	PARKING PROHIBITED (RIGHT)	2	ID-31	CUL-DE-SAC	2
RB-51L	PARKING PROHIBITED (LEFT)	2	XXXXXXXX	STREET BLADE TEXT: BERWICK BAY RANCHER RD	1

FENCING

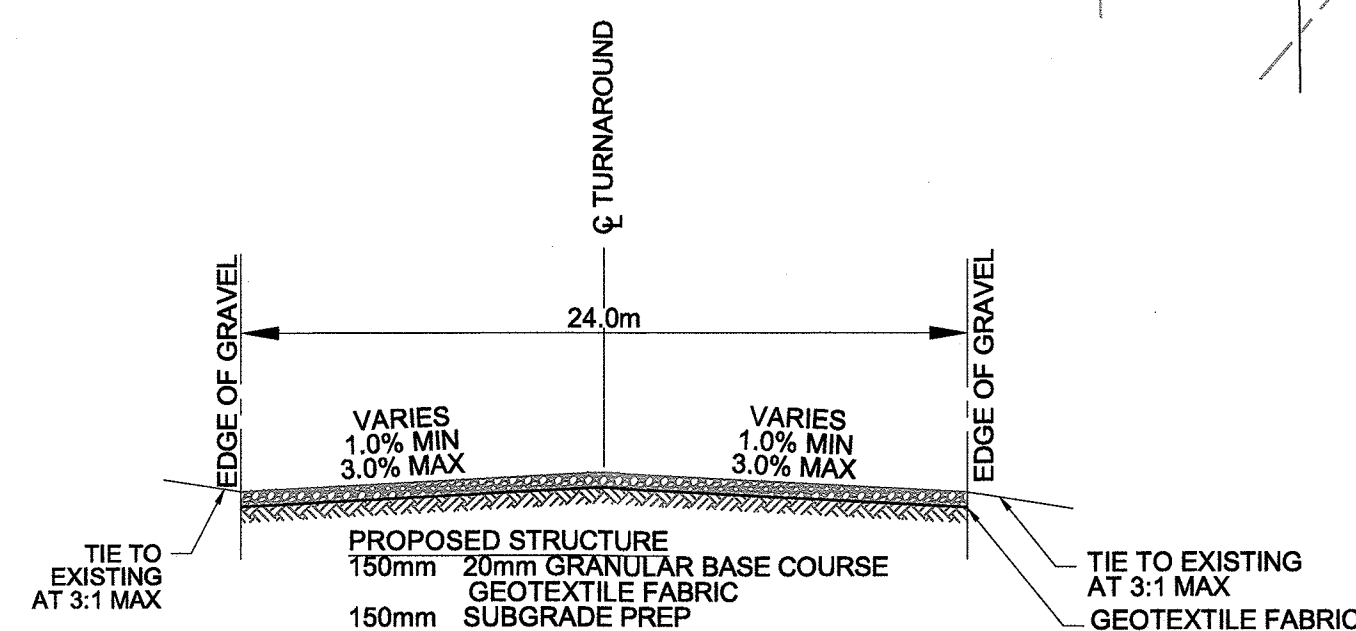
- SEE LANDSCAPING DRAWING (6618-226.01) FOR FENCING LOCATIONS AND DETAILS.

NOTES

- NO DRIVEWAYS PERMITTED WITHIN 1.5m OF STREET FURNITURE.
- APPROVED DRIVEWAY LOCATIONS ARE SHOWN. NO DEVIATION PERMITTED WITHOUT PRIOR APPROVAL OF THE COUNTY ENGINEER.
- CURB TRANSITION FROM ROLLED FACE TO STRAIGHT FACE ARE SHOWN THUS: SF+ RF



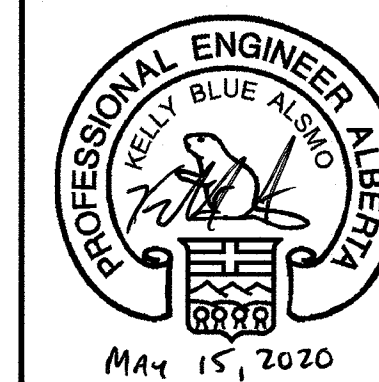
SECTION A-A



EXISTING	LEGEND	PROPOSED	FUTURE	EXISTING	PROPOSED	EXISTING	PROPOSED
---	PROPERTY LINE	---	---	●	VALVE	---	---
---	RIGHT OF WAY LINE	---	---	○	HYDRANT	---	---
---	CURB AND GUTTER	---	---	○	MANHOLE	---	---
---	SEPARATE WALK	---	---	○	CURB STOP	---	---
---	ASPHALT TRAIL	---	---	○	CATCH BASIN	---	---
④5	STREET ADDRESS	XX	---	○	TRANSFORMER	---	---
②	STREET SIGNS	②	---	○	PEDESTAL	---	---
				○	LIGHT STANDARD	---	---
				○	POWER POLES	---	---
				○	MAILBOX	---	---
				○	T-BOLLARDS	---	---
				---	---	---	---
				---	---	---	---

NO.	REVISION	DATE	BY
6.	3rd SUBMISSION FOR COUNTY APPROVAL	MAY 15/20	KBA
5.	REVISIONS PER COUNTY COMMENTS	MAY 07/20	KBA
4.	2nd SUBMISSION FOR COUNTY REVIEW	APR 03/20	KBA
3.	REMOVED NORTH AREA FROM STAGE 6	MAR 24/20	KBA
2.	REVISIONS PER COUNTY COMMENTS	FEB 14/20	KBA
1.	1st SUBMISSION FOR COUNTY/CLIENT REVIEW	DEC 20/19	KBA

PERMIT TO PRACTICE
AL-TERRA ENGINEERING LTD.
Signature: *[Signature]*
Date: *May 15, 2020*
PERMIT NUMBER: P 2104
The Association of Professional Engineers, Geologists and Geophysicists of Alberta



Al-Terra
Engineering Ltd.
ROAD OVERALL, STREET FURNITURE, & ADDRESSING PLAN
DESIGN: KBA CHECKED: KBA JOB NO: 6618
DRAWN BY: VM APPROVED: KBA DRAWING NO.
SCALE: 1:750 DATE: NOVEMBER 2019 6618-207/221

ARDROSSAN HEIGHTS STAGE 6
BY
ARDROSSAN LAND CORPORATION
IN
STRATHCONA COUNTY