

Name	C100	Point	North	East
R	84.300	PC	5935928.599	57183.610
Lc	32.749	PI	5935914.414	57192.201
Delta	22°15'29"	CC	5935972.269	57255.717
T	16.583	PT	5935904.540	57205.525
Name	C101	Point	North	East
R	9.000	PC	5935904.540	57205.525
Lc	17.313	PI	5935896.857	57215.893
Delta	110°12'56"	CC	5935911.771	57210.883
T	12.905	PT	5935908.241	57219.521
Name	C102	Point	North	East
R	93.800	PC	5935923.678	57175.485
Lc	39.754	PI	5935906.416	57185.939
Delta	248°16'59"	CC	5935972.269	57255.717
T	20.180	PT	5935894.981	57202.566
Name	C103	Point	North	East
R	10.000	PC	5935880.620	57204.807
Lc	16.272	PI	5935888.986	57211.285
Delta	93°02'54"	CC	5935900.444	57236.702
T	10.547	PT	5935890.777	57234.143
Name	C107	Point	North	East
R	93.800	PC	5935883.029	57226.829
Lc	5.090	PI	5935882.244	57229.251
Delta	390°33"	CC	5935972.269	57255.717
T	2.546	PT	5935881.593	57231.712
Name	C108	Point	North	East
R	10.000	PC	5935883.029	57226.829
Lc	12.826	PI	5935885.328	57219.726
Delta	73°29'21"	CC	5935873.515	57223.749
T	7.466	PT	5935879.171	57215.503
Name	C109	Point	North	East
R	84.300	PC	5935880.014	57204.333
Lc	0.769	PI	5935880.316	57204.571
Delta	0°31'21"	CC	5935932.230	57138.152
T	0.394	PT	5935880.620	57204.807

Name	C105	Point	North	East
R	93.550	PC	5935903.513	57227.185
Lc	2.532	PI	5935904.718	57227.574
Delta	1°33'03"	CC	5935932.230	57138.152
T	1.266	PT	5935905.933	57227.930
Name	C106	Point	North	East
R	10.000	PC	5935903.513	57227.185
Lc	16.240	PI	5935893.476	57233.948
Delta	93°02'54"	CC	5935900.444	57236.702
T	10.547	PT	5935890.777	57234.143
Name	C110	Point	North	East
R	93.800	PC	5935883.029	57226.829
Lc	5.090	PI	5935882.244	57229.251
Delta	390°33"	CC	5935972.269	57255.717
T	2.546	PT	5935881.593	57231.712
Name	C111	Point	North	East
R	10.000	PC	5935883.029	57226.829
Lc	12.826	PI	5935885.328	57219.726
Delta	73°29'21"	CC	5935873.515	57223.749
T	7.466	PT	5935879.171	57215.503
Name	C119	Point	North	East
R	93.800	PC	5935874.130	57211.791
Lc	6.261	PI	5935876.588	57213.731
Delta	3°49'29"	CC	5935932.230	57138.152
T	3.132	PT	5935879.171	57215.503

Name	C110	Point	North	East
R	84.300	PC	5935844.108	57173.003
Lc	19.978	PI	5935850.308	57180.896
Delta	13°34'42"	CC	5935910.403	57120.930
T	10.036	PT	5935858.187	57187.112
Name	C111	Point	North	East
R	93.800	PC	5935836.637	57178.871
Lc	22.229	PI	5935843.535	57187.653
Delta	13°34'42"	CC	5935910.403	57120.930
T	11.167	PT	5935852.302	57194.570
Name	C112	Point	North	East
R	10.000	PC	5935827.454	57136.282
Lc	15.293	PI	5935820.161	57142.516
Delta	87°37'27"	CC	5935833.951	57142.884
T	9.594	PT	5935826.087	57150.061
Name	C113	Point	North	East
R	10.000	PC	5935819.373	57156.891
Lc	16.123	PI	5935812.934	57148.694
Delta	92°22'33"	CC	5935811.509	57163.069
T	10.424	PT	5935805.011	57155.467

ROADWAY STRUCTURES

- LOCAL ROADWAYS**
 - 40mm 10mm LT ASPHALT
 - 75mm 10mm LT ASPHALT
 - 150mm 20mm GRANULAR BASE COURSE
 - 150mm SUBGRADE PREP WITH 10kg OF CEMENT STABILIZATION
- TEMPORARY GRAVEL TURNAROUND**
 - 150mm 20mm GRANULAR BASE COURSE
 - 150mm GEOTEXTILE FABRIC
 - 150mm SUBGRADE PREP

LINEPAINTING & PAVEMENT MARKINGS

- TO STRATHCONA COUNTY STANDARDS**
 - ALL STREET MARKINGS TO BE PAINT AT CCC
 - ALL STREET MARKINGS ARE TO BE PF TYPE INLAY THERMOPLASTIC AT FAC
 - ③ SOLID YELLOW CENTERLINE 0.10m WIDE

FENCING

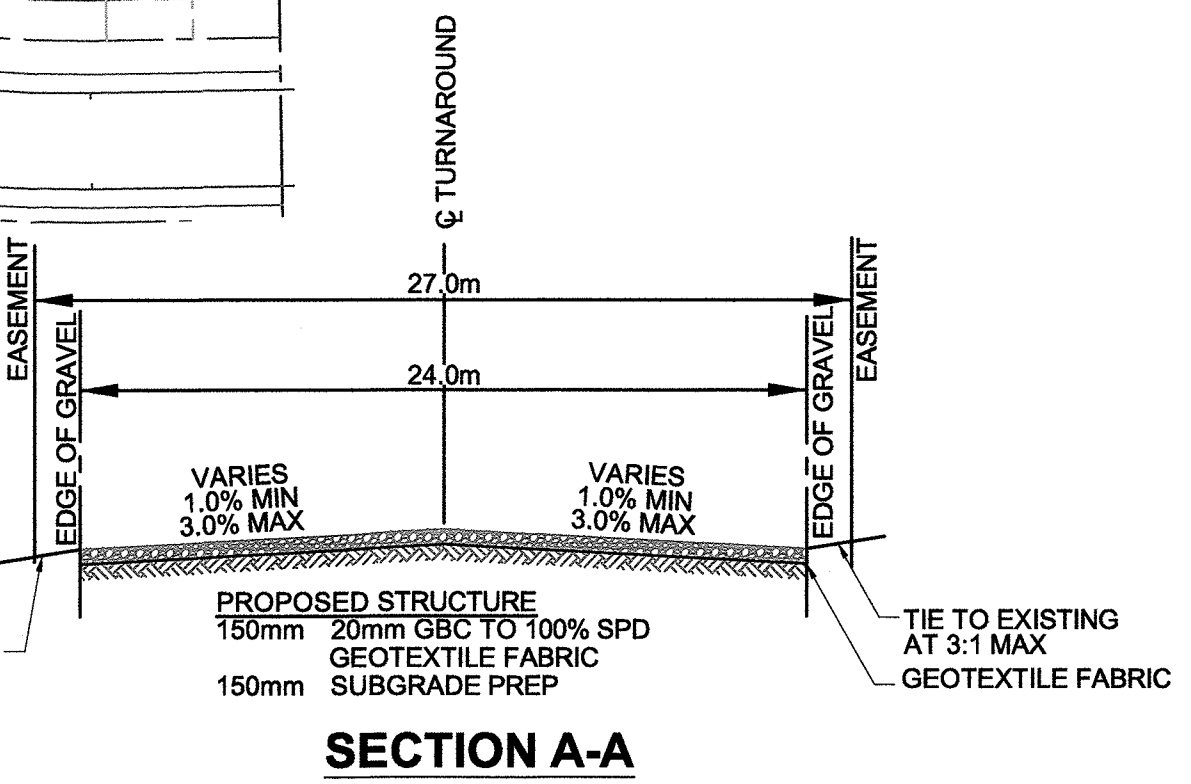
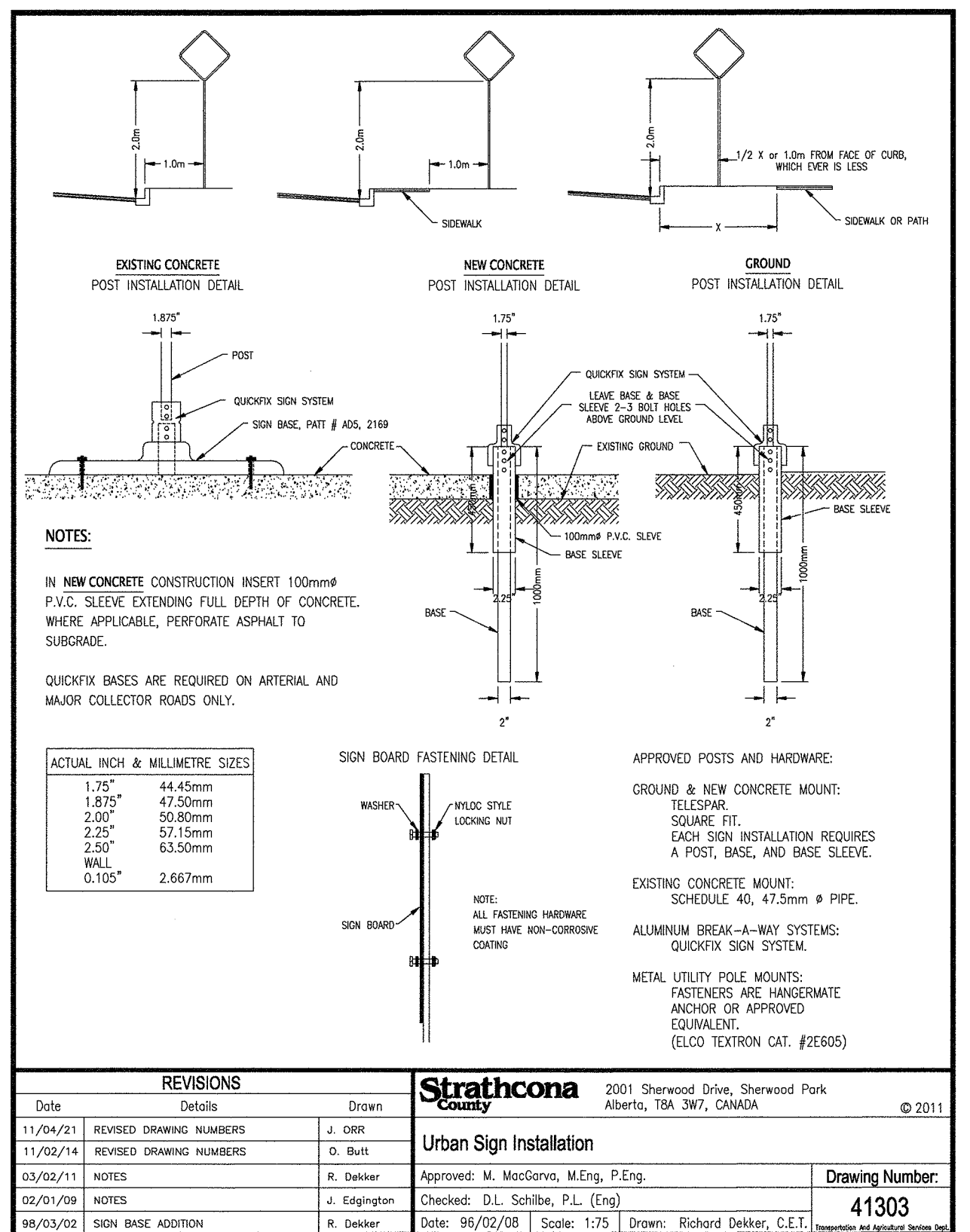
- SEE LANDSCAPING DRAWINGS (6617-226.02 & 6617-226.04) FOR FENCING LOCATIONS AND DETAILS

NOTES

- NO DRIVEWAYS PERMITTED WITHIN 1.5m OF STREET FURNITURE.
- APPROVED DRIVEWAY LOCATIONS ARE SHOWN. NO DEVIATION PERMITTED WITHOUT PRIOR APPROVAL OF THE COUNTY ENGINEER.
- CURB TRANSITION FROM ROLLED FACE TO STRAIGHT FACE ARE SHOWN THUS: SF → RF

SIGNAGE TABLE OF MATERIALS

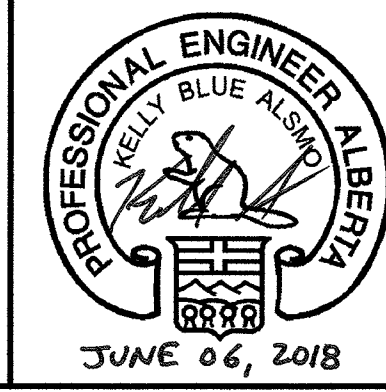
ITEM	TYPE	NUMBER
WA-8	CHECKERBOARD - DEAD END	3
RA-2	YIELD	2
	STREET BLADE	1
	HORTON WAY	1
	RANCHER ROAD	1
	HARNES LINK	2



EXISTING	LEGEND	PROPOSED	FUTURE	EXISTING	PROPOSED	EXISTING	PROPOSED
	PROPERTY LINE				VALVE		HYDRANT
	RIGHT OF WAY LINE				CURB STOP		CATCH BASIN
	CURB AND GUTTER				TRANSFORMER		PEDESTAL
	SEPARATE WALK				LIGHT STANDARD		POWER POLES
	ASPHALT TRAIL				MAILBOX		T-BOLLARDS
	STREET ADDRESS				DRIVEWAY LOCATION		WATER, SANITARY & STORM SERVICE LOCATIONS
	STREET SIGNS						

NO.	REVISION	DATE	BY
1.	1st SUBMISSION FOR COUNTY/CLIENT REVIEW	FEB 14/18	KBA
2.	REVISED PER COUNTY COMMENTS	APR 04/18	KBA
3.	2nd SUBMISSION FOR COUNTY REVIEW	APR 13/18	KBA
4.	REVISED PER COUNTY COMMENTS	MAY 31/18	KBA
5.	3rd SUBMISSION FOR COUNTY APPROVAL	JUN 06/18	KBA

PERMIT TO PRACTICE
AL-TERRA ENGINEERING LTD.
Signature: *[Signature]*
Date: **JUNE 06, 2018**
PERMIT NUMBER: P 2104
The Association of Professional Engineers, Geologists and Geophysicists of Alberta



DESIGN:	CHECKED:	JOB NO.:
KBA	KBA	6617
DRAWN BY:	APPROVED:	DRAWING NO.:
VM	KBA	6617-207/221
SCALE:	DATE:	DATE:
1:750	JANUARY 2018	6617-207/221

AL-Terra
2001 Sherwood Drive, Sherwood Park
Alberta, T8A 3W7, CANADA © 2011

ARDROSSAN HEIGHTS STAGE 5
BY
ARDROSSAN LAND CORPORATION
IN
STRATHCONA COUNTY

Urban Sign Installation
Checked: DL Schiba, P.L. (Eng)
Date: 06/02/2018 | Scale: 1:75 | Drawn: Richard Dekker, C.E.T.